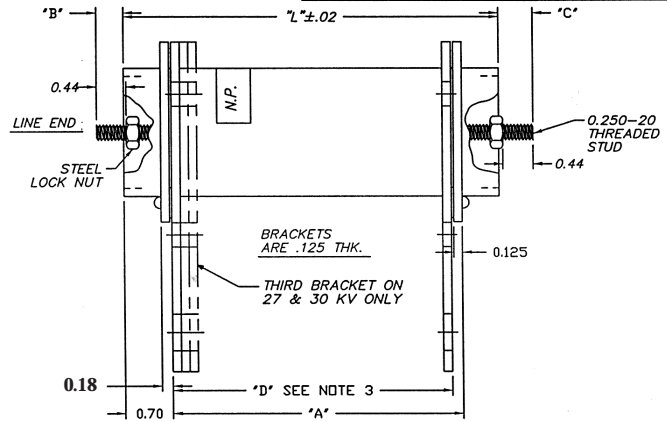


UNLESS OTHERWISE SPECIFIED USE THE FOLLOWING			GENERAL ELECTRIC		3 2B258505	
SURFACES	TOLERANCES ON DIMENSIONS		TITLE			
✓	2 PL DEC	3 PL DEC	OUTLINE			
	f	f	FIRST MADE FOR TBD - CPO 9L25 UNDER OIL ARRESTER			
	f	DEC	CONT ON SH SH			



NOTE: CATALOG NUMBERS BOTH 10 AND 11 PLACES CARRY THE SAME VALUES.

CATALOG NUMBER	RA77NG KV-RMS	KV BIL	MCOV V RMS	A"	B" t.06	"C" t.32	O	L	WT LBS
9L25CUA133	J	75	255	1.74	.41	.36	1.54	2.94	0.80
9L25CUB133	6	75	51	280	.41	.36	260	4.00	1.50
9L25CUC133	9	95	7.65	3.76	.41	.36	3.56	4.96	1.90
9L25CUD 133	10	95	8.4	4.04	.41	.36	3.84	5.24	2.00
9L25CUE133	12	95	10.2	4.80	.41	.36	4.60	6.00	230
9L25CUF133	15	125	12.7	5.70	.41	.36	5.50	6.90	270
9L25CUG133	18	125	15.3	6.82	.41	.36	6.62	8.02	3.20
9L25CUH133	21	125	17.0	7.48	.41	.36	7.28	8.68	3.50
9L25CUK133	27	150	22.0	9.70	.66	.34	9.50	10.90	4.40
9L25CUL 133	30	150	24.4	10.66	.66	.34	10.46	11.86	4.90

NOTES:

- ARRESTERS ARE FOR USE IN TRANSFORMER OIL. THEY WILL OPERATE SATISFACTORY IN WEIGHTED AVERAGE OIL TEMPERATURE OF 90 C (125 C MAX)
- TO DEVELOP THE BIL KV TABULATED. THE MOUNTING BRACKET MUST NOT OVERLAP GROUNDED STRUCTURE BY MORE THAN .95 INCHES.
- FOR VERTICAL MOUNTING OF ARRESTER, MOVE THE (2) MOUNTING BRACKETS [(3) FOR 21 & 27 KV] TO THE LINE END. MAY ALSO BE MOUNTED VERTICALLY FROM TANK WALL BY SEPARATING THE MOUNTING BRACKETS. FOR 21 & 27 KV (2) BRACKETS MUST BE ON TOP. FOR HORIZONTAL MOUNTING SEPARATE THE MOUNTING BRACKETS TO D" DIMENSION. D" DIMENSION IS MAX DISTANCE BETWEEN BRACKETS & 75% OF A" DIMENSION IS RECOMMENDED MIN. DISTANCE.
- SPACE REQUIRED FOR MECHANICAL CLEARANCE.



REVISIONS 1 L MCLEAN 11/22/93 CHG "B" & "C" DIM & WT 2 D. KANUPP 02/24/94 ADD MCOV COLUMN CORRECT VALUES IN TABLE 3 A. DOWNS 30NOV94 CHNG 27&27 TO 27&30	MADE BY L MCLEAN 11/02/93 ISSUED BY		APPROVALS	HICKORY TBD - CPO	3 2B258505 CONT ON SH SH	CPO-B PRINTS TO